

VipIR™ EMBEDDED IMAGE PROCESSING SYSTEM

DEVELOPED BY IEC, THE VipIR™ EMBEDDED IMAGE PROCESSING SYSTEM PROVIDES THERMAL IMAGING ENHANCEMENT AND FEATURES UNLIKE ANY OTHER. THE VipIR™ SYSTEM IMPROVES IMAGE QUALITY TO DELIVER THE SHARPEST THERMAL IMAGERY AVAILABLE, WHILE PROVIDING POWERFUL IMAGING TOOLS FOR SUPERIOR SITUATIONAL AWARENESS, UNDER ANY CONDITIONS.

VipIR™: STATE-OF-THE-ART THERMAL IMAGE PROCESSING...ONLY FROM IEC INFRARED SYSTEMS

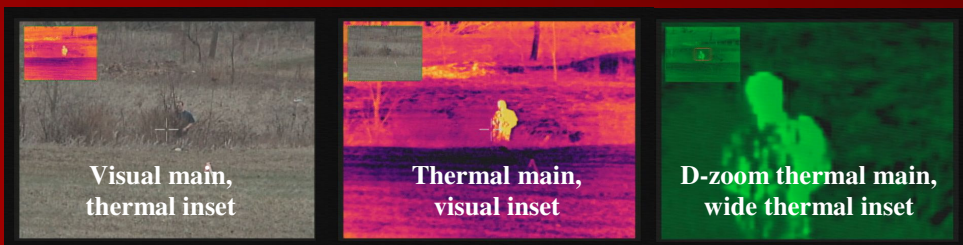
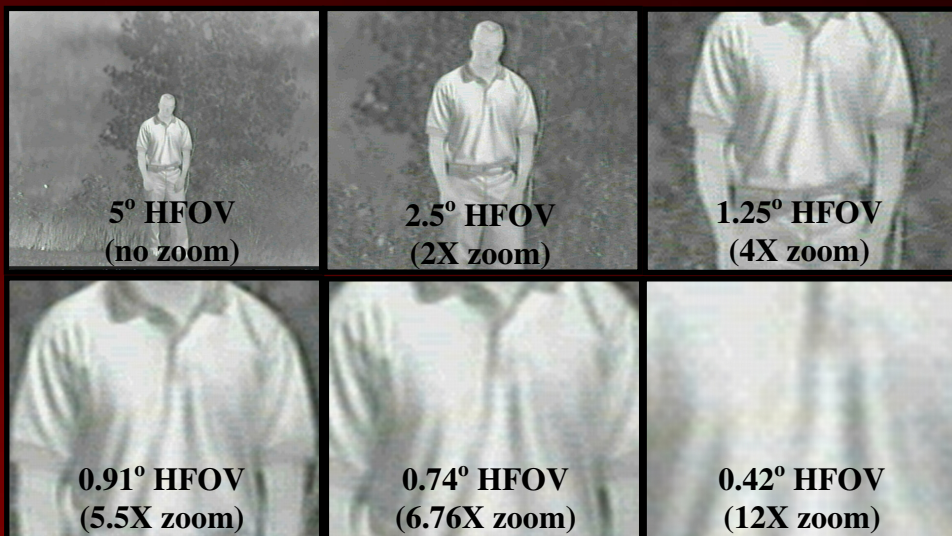


THERMAL-VISUAL FUSION:

TRUE FUSION OF THERMAL TARGETS ON VISUAL BACKGROUND, THROUGH SMART PIXEL REPLACEMENT: NOT JUST IMAGE MIXING

CONTINUOUS THERMAL DIGITAL ZOOM TO 12X:

WHILE MOST THERMAL IMAGERS ONLY PROVIDE 2X OR 4X DIGITAL ZOOM, THE VipIR™ SYSTEM PROVIDES IEC'S IMAGERS WITH SMOOTH, HIGH QUALITY CONTINUOUS DIGITAL ZOOM ALL THE WAY OUT TO 12X.



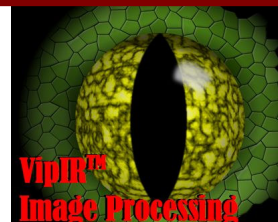
PICTURE-IN-PICTURE (PIP):

ALLOWS BOTH VIDEO STREAMS TO BE SEEN SIMULTANEOUSLY, OR ALLOWS WIDE-ANGLE THERMAL FOR SITUATIONAL AWARENESS WITH DIGITAL ZOOM INTERROGATION.

EXPORT OF THESE SYSTEMS IS CONTROLLED BY THE OFFICE OF MUNITIONS CONTROL, U.S. DEPARTMENT OF STATE AND IS SUBJECT TO THE INTERNATIONAL TRAFFIC IN ARMS REGULATIONS. THE EXPORT OF NIGHT VISION PRODUCTS IS REGULATED BY THE U.S. DEPARTMENT OF STATE. SHIPMENT WITHOUT PROPER LICENSING IS PROHIBITED.



IEC Infrared Systems
440-234-8000
www.iecinfrared.com



VipIR™ EMBEDDED IMAGE PROCESSING SYSTEM

VipIR™: STATE-OF-THE-ART THERMAL IMAGE PROCESSING...ONLY FROM IEC INFRARED SYSTEMS

FEATURE SET

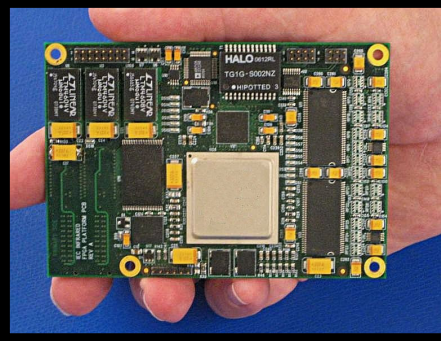
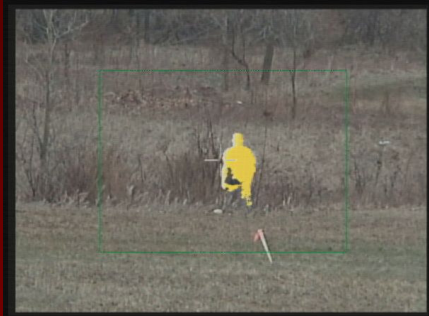


IMAGE ENHANCEMENT FEATURES

- **DYNAMIC HISTOGRAM STRETCHING**
 - NON-LINEAR, SELF ADJUSTING IMAGE HISTOGRAMMING, FOR OPTIMAL IMAGE QUALITY IN ANY CONDITION
- **LOCAL AREA PROCESSING (LAP)**
 - SMALL KERNEL, LOCAL AREA OPTIMIZATION, FOR ENHANCEMENT OF FINE IMAGE DETAILS & FEATURES
- **THERMAL IMAGE COLORIZATION**
 - MULTIPLE USER SELECTABLE COLOR PALETTES, ALLOWING DIFFERENT THERMAL LEVELS TO BE HIGHLIGHTED



SITUATIONAL AWARENESS IMAGING TOOLS

- **12X CONTINUOUS DIGITAL ZOOM**
 - SMOOTH CONTINUOUS ZOOM WITH ADVANCED INTERPOLATION PROVIDING HIGH QUALITY IMAGERY OUT TO 12X: LONGEST ZOOM ON THE MARKET
- **MULTI MODE PICTURE-IN-PICTURE (PIP)**
 - MULTIPLE MODES OF PIP, INCLUDING:
 - THERMAL MAIN WITH VISUAL INSET
 - VISUAL MAIN WITH THERMAL INSET
 - THERMAL-IN-THERMAL: MAINTAIN WIDE FOV INSET, DIGITAL ZOOM IN MAIN
- **SMART-PIXEL THERMAL/VISUAL IMAGE FUSION (MULTI-MODE)**
 - SMART PIXEL TECHNOLOGY: FUSION IS DONE ONLY ON THE PIXELS THAT MATTER, NOT ACROSS THE ENTIRE IMAGE
 - DIGITAL PARALLAX CORRECTION, USER CONTROLLABLE
 - MULTIPLE MODES OF IMAGE FUSION, INCLUDING:
 - MODE 1- THERMAL PIXEL REPLACEMENT: THERMAL TARGETS ARE SHOWN IN PURE THERMAL, BACKGROUND IN PURE VISIBLE.
 - MODE 2- TARGET ALPHA-BLENDING: THERMAL & VISUAL BLENDED ON TARGETS OF INTEREST, BUT BACKGROUND REMAINS PURE VISIBLE
- **INTERACTIVE STADIOMETRY: PASSIVE RANGE ESTIMATION**
 - INTERACTIVE TOOL ALLOWS USER TO PASSIVELY ESTIMATE RANGE TO TARGET
- **PASSIVE GEO-LOCATION**
 - CALCULATES ESTIMATED GEOGRAPHIC LOCATION UNDER THE CROSSHAIR, WITH NO LASER EMISSION
 - ACTIVE GEO-LOCATION IF EQUIPPED WITH LASER RANGE FINDER



EXPORT OF THESE SYSTEMS IS CONTROLLED BY THE OFFICE OF MUNITIONS CONTROL, U.S. DEPARTMENT OF STATE AND IS SUBJECT TO THE INTERNATIONAL TRAFFIC IN ARMS REGULATIONS. THE EXPORT OF NIGHT VISION PRODUCTS IS REGULATED BY THE U.S. DEPARTMENT OF STATE. SHIPMENT WITHOUT PROPER LICENSING IS PROHIBITED.



IEC Infrared Systems
440-234-8000
www.iecinfrared.com

